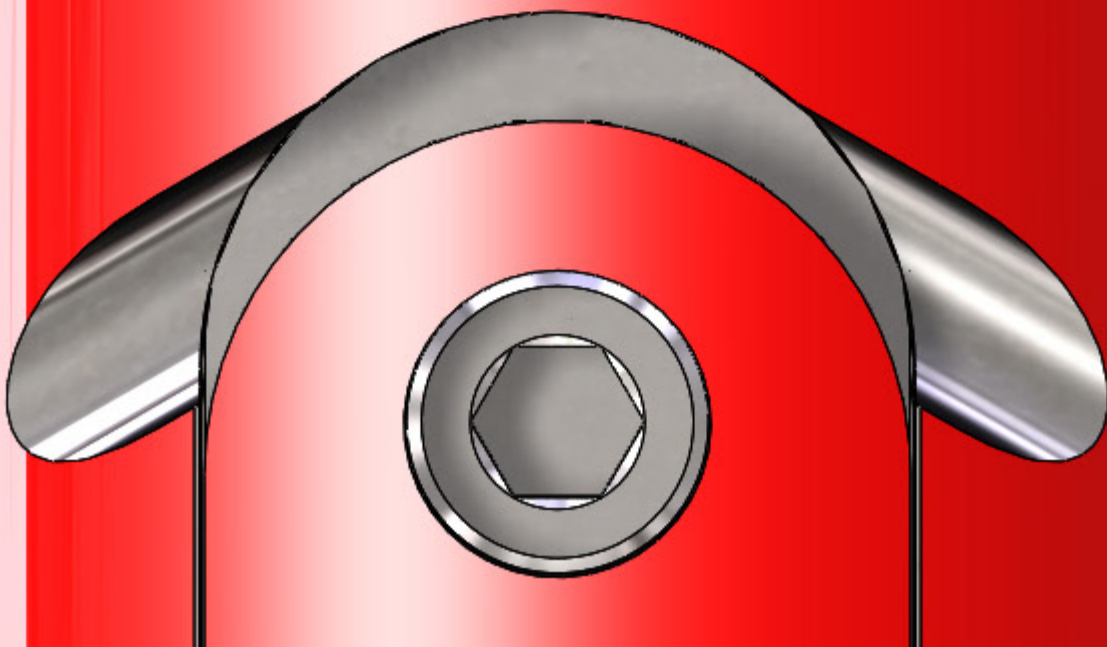


MELFRED BORZALI

Transmitter Housing Guide 2013



Digitrak Housings

3625-HT6

3625-HT-138

3627-HT10

3627-HT-1312

3632-HT14

3632-HT-1316

3742-HU (DIGI)18

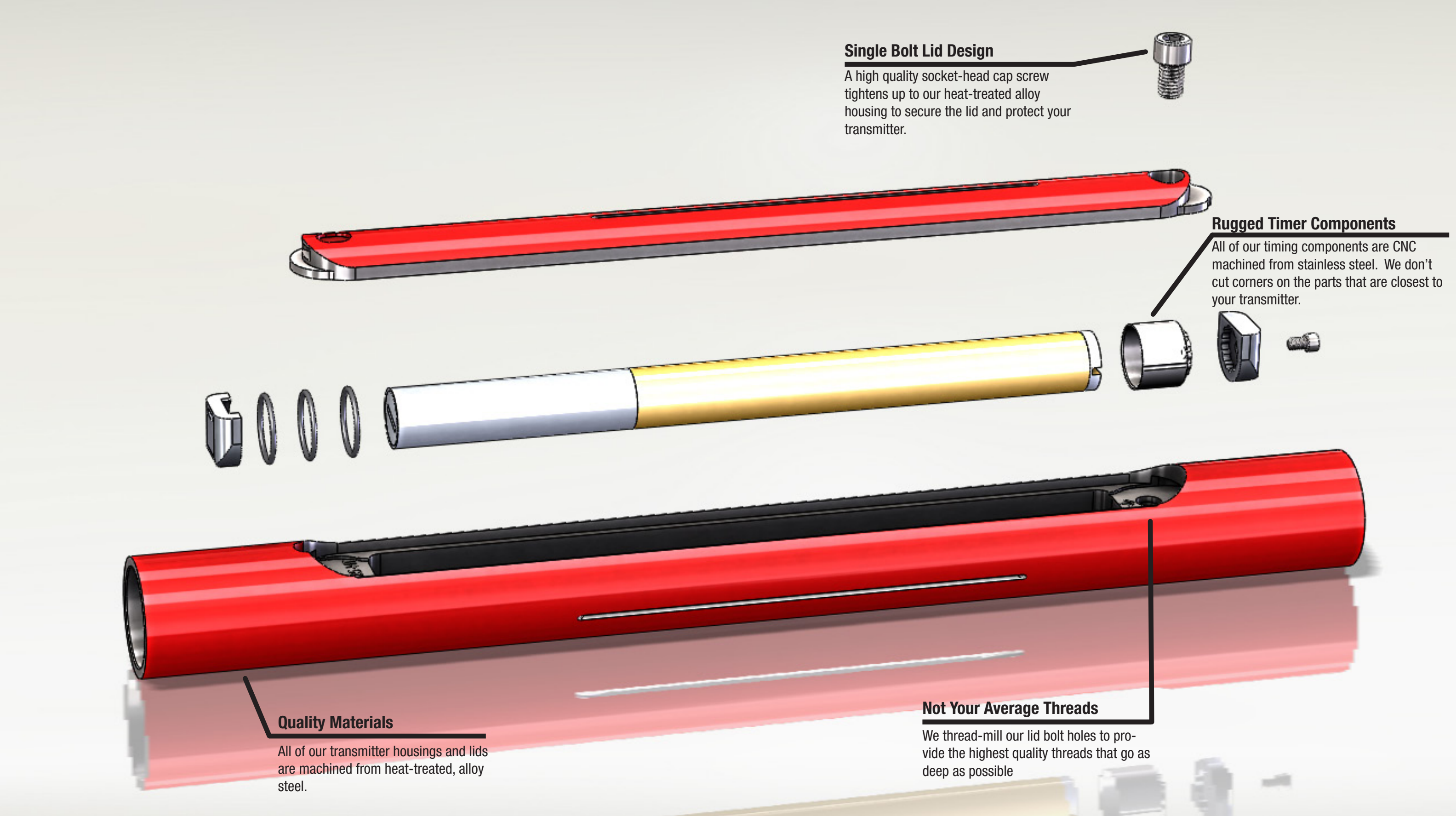
3748-HU (DIGI)20

Melfred Borzall Inc.
January, 2013

805.739.0118
800.558.7500

www.melfredborzall.com

Digitrak Housing Features



Single Bolt Lid Design

A high quality socket-head cap screw tightens up to our heat-treated alloy housing to secure the lid and protect your transmitter.



Rugged Timer Components

All of our timing components are CNC machined from stainless steel. We don't cut corners on the parts that are closest to your transmitter.



Quality Materials

All of our transmitter housings and lids are machined from heat-treated, alloy steel.

Not Your Average Threads

We thread-mill our lid bolt holes to provide the highest quality threads that go as deep as possible

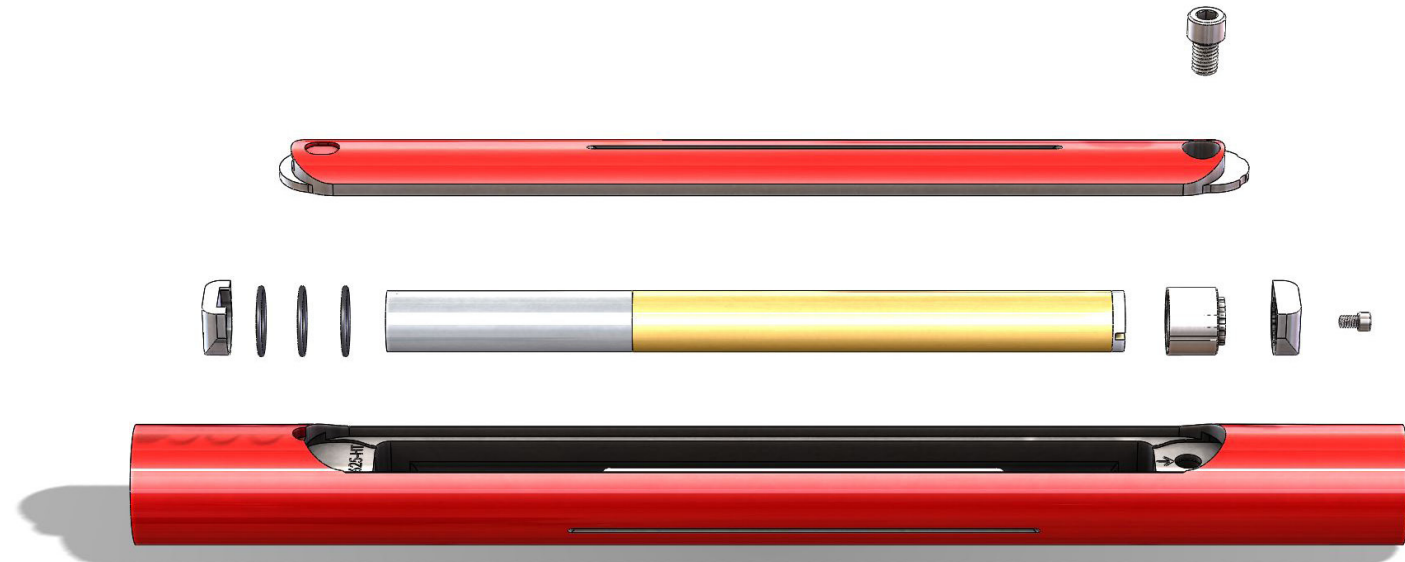
3625-HT

2.5" Sonde Housing

NOTES

Box Size: 3" x 29.25"L

Connections: 21F x 21F



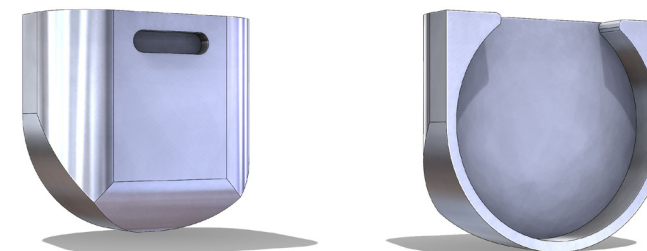
3000-TIMER1



3600-TIMER2



3600-TIMER3



Bill of Materials		
PART #	DESCRIPTION	QUANTITY
3625-HT-BODY	Transmitter Housing Body	1
3625-HT-CP	Transmitter Housing Lid	1
SHCS-1/2x3/4	Locking Lid Bolt	2
3000-TIMER1	Digitrak Sonde Timing Cap	1
3600-TIMER2	Small Digitrak Sprocket Timer	1
3600-TIMER3	Small Digitrak Round Timer	1
SHCS-1/4x3/8 SS	Digitrak Timer Bolt	1
O-RING-124	Sonde Support O-Ring	3
AW-3/8	3/8" Allen Wrench	1
AW-3/16	3/16" Allen Wrench	1

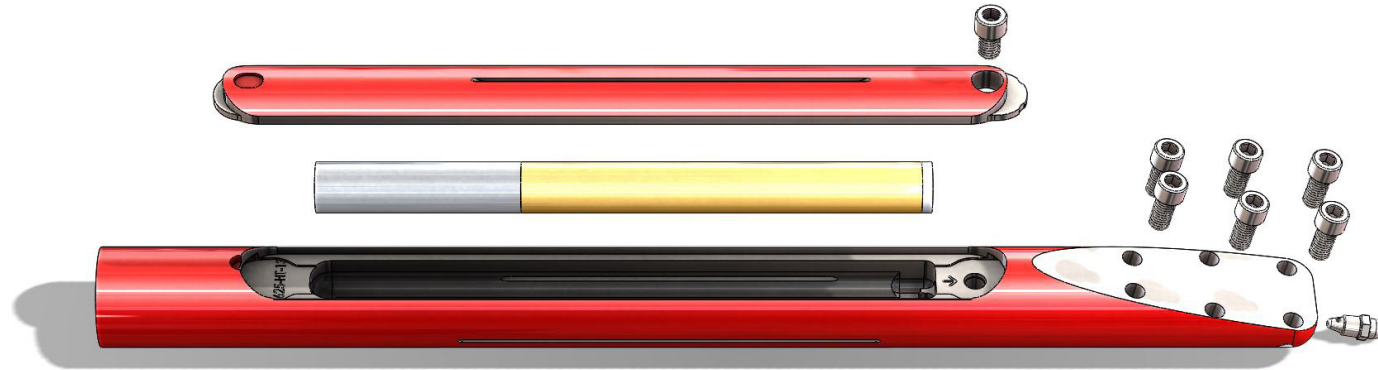
3625-HT-13

2.5" Sonde Housing w/ Steer Face

NOTES

Box Size: 3" x 33.25"L

Connections: 21F x "13" Bolt Pattern



Bill of Materials

PART #	DESCRIPTION	QUANTITY
3625-HT-13-BODY	Transmitter Housing Body	1
3625-HT-CP	Transmitter Housing Lid	1
SHCS-1/2x3/4	Locking Lid Bolt	2
SHCS-1/2x1	Steer Bolt	6
1600-1712	Super Nozzle	1
AW-3/8	3/8" Allen Wrench	1

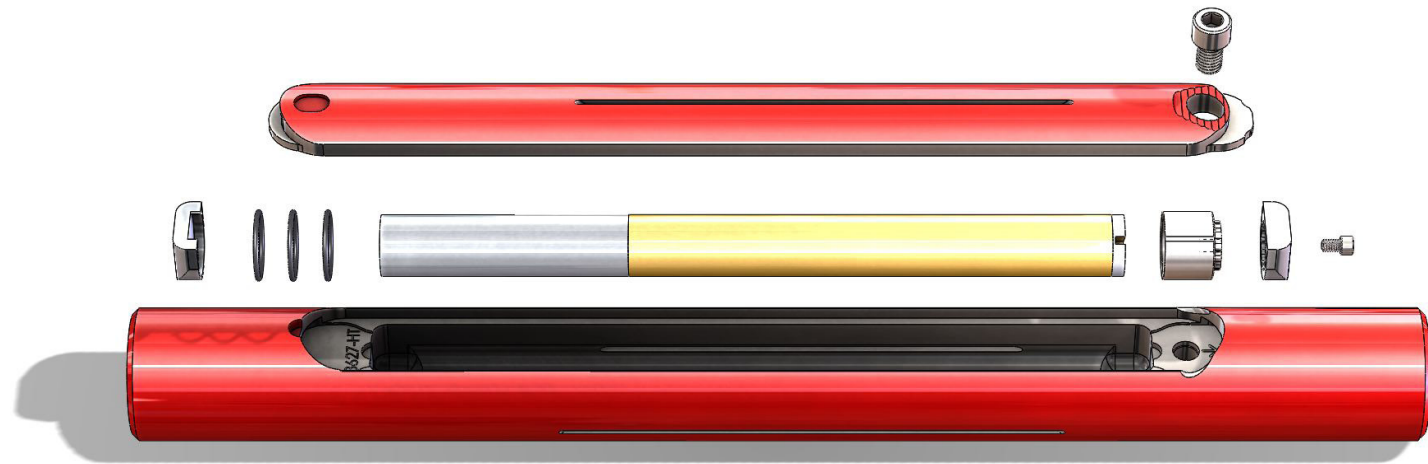
3627-HT

2.75" Sonde Housing

NOTES

Box Size: 3" x 29.25"L

Connections: 21F x 21F



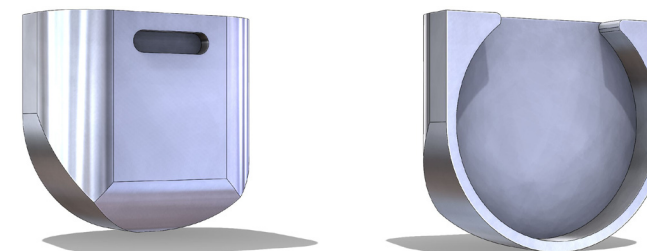
3000-TIMER1



3600-TIMER2



3600-TIMER3



Bill of Materials

PART #	DESCRIPTION	QUANTITY
3627-HT-BODY	Transmitter Housing Body	1
3627-HT-CP	Transmitter Housing Lid	1
SHCS-1/2x3/4	Locking Lid Bolt	2
3000-TIMER1	Digitrak Sonde Timing Cap	1
3600-TIMER2	Small Digitrak Sprocket Timer	1
3600-TIMER3	Small Digitrak Round Timer	1
SHCS-1/4x3/8 SS	Digitrak Timer Bolt	1
O-RING-124	Sonde Support O-Ring	3
AW-3/8	3/8" Allen Wrench	1
AW-3/16	3/16" Allen Wrench	1

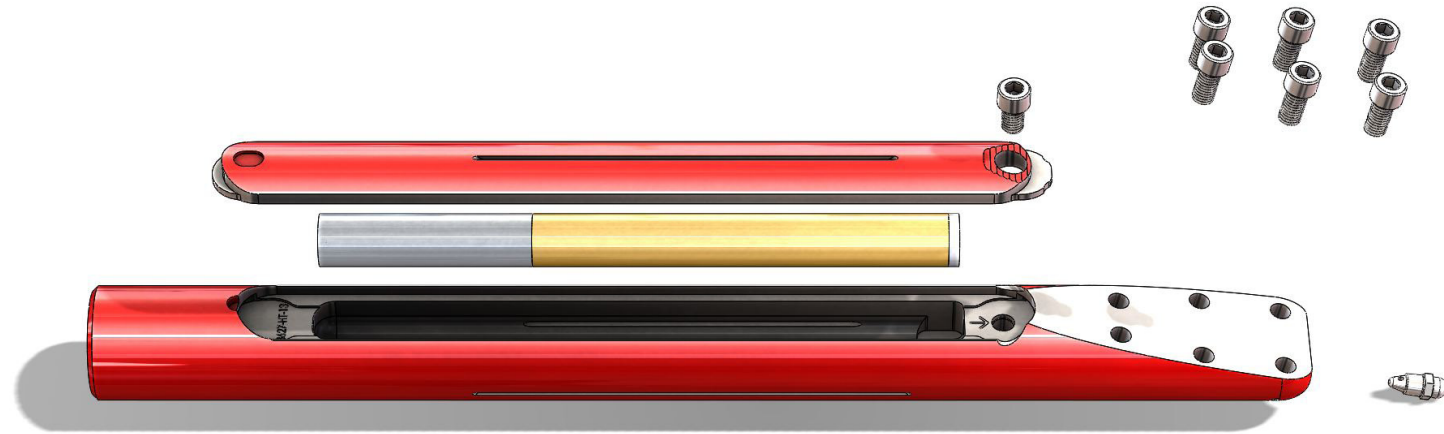
3627-HT-13

2.75" Sonde Housing w/ Steer Face

NOTES

Box Size: 3" x 33.25"L

Connections: 21F x "13" Bolt Pattern



Bill of Materials

PART #	DESCRIPTION	QUANTITY
3627-HT-13-BODY	Transmitter Housing Body	1
3627-HT-CP	Transmitter Housing Lid	1
SHCS-1/2x3/4	Locking Lid Bolt	2
SHCS-1/2x1	Steer Bolt	6
1600-1712	Super Nozzle	1
AW-3/8	3/8" Allen Wrench	1

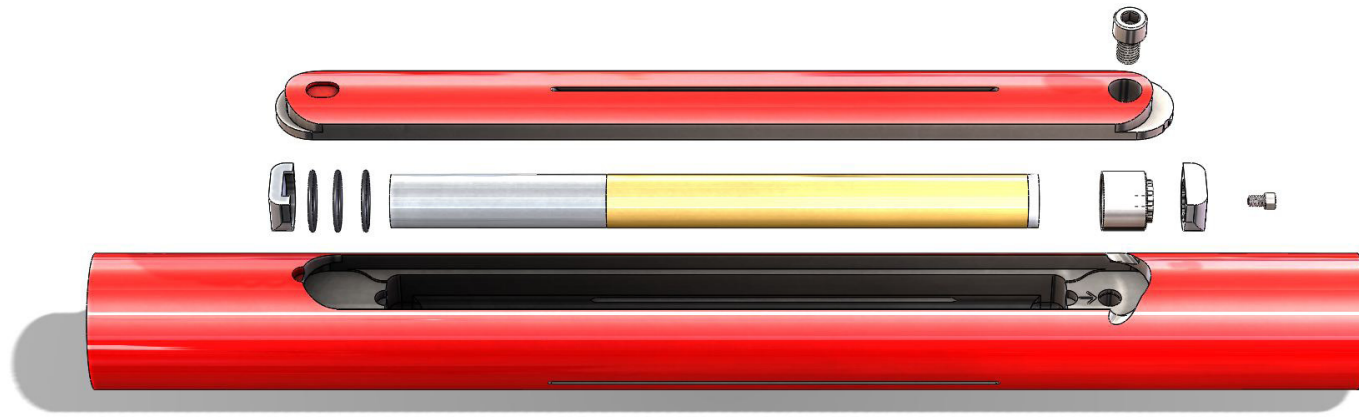
3632-HT

3.25" Sonde Housing

NOTES

Box Size: 3" x 33"L

Connections: 23F x 23F



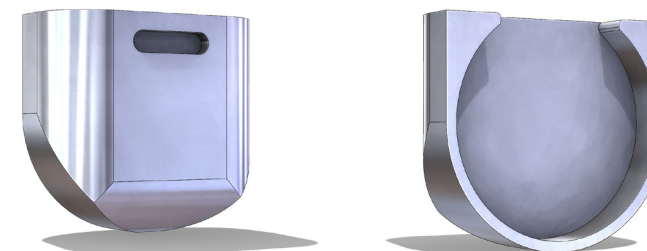
3000-TIMER1



3600-TIMER2



3600-TIMER3



Bill of Materials

PART #	DESCRIPTION	QUANTITY
3632-HT-BODY	Transmitter Housing Body	1
3632-HT-CP	Transmitter Housing Lid	1
SHCS-1/2x3/4	Locking Lid Bolt	2
3000-TIMER1	Digitrak Sonde Timing Cap	1
3600-TIMER2	Small Digitrak Sprocket Timer	1
3600-TIMER3	Small Digitrak Round Timer	1
SHCS-1/4x3/8 SS	Digitrak Timer Bolt	1
O-RING-124	Sonde Support O-Ring	3
AW-3/8	3/8" Allen Wrench	1
AW-3/16	3/16" Allen Wrench	1

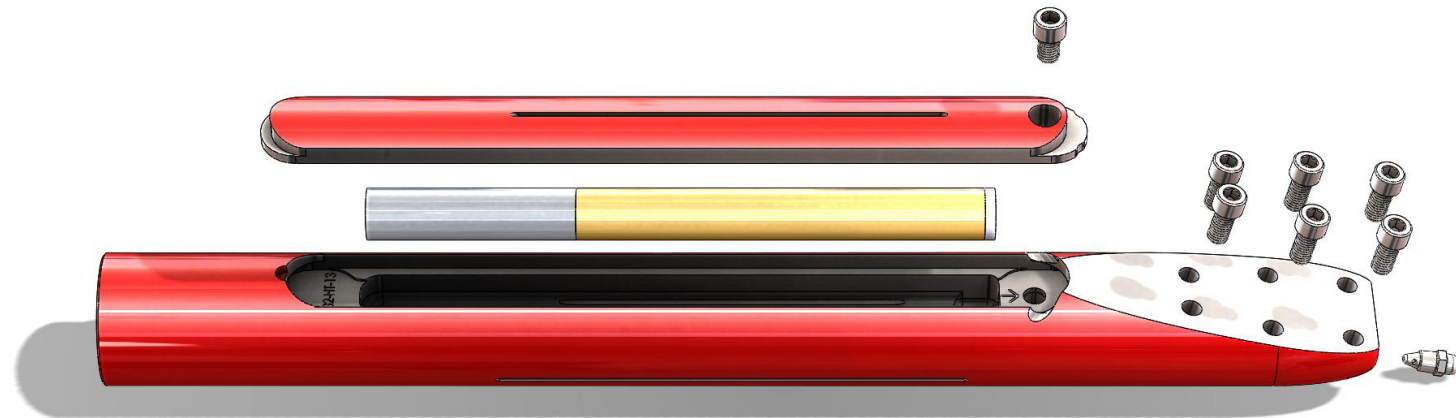
3632-HT-13

3.25" Sonde Housing w/ Steer Face

NOTES

Box Size: 4" x 34"L

Connections: 23F x "13" Bolt Pattern



Bill of Materials

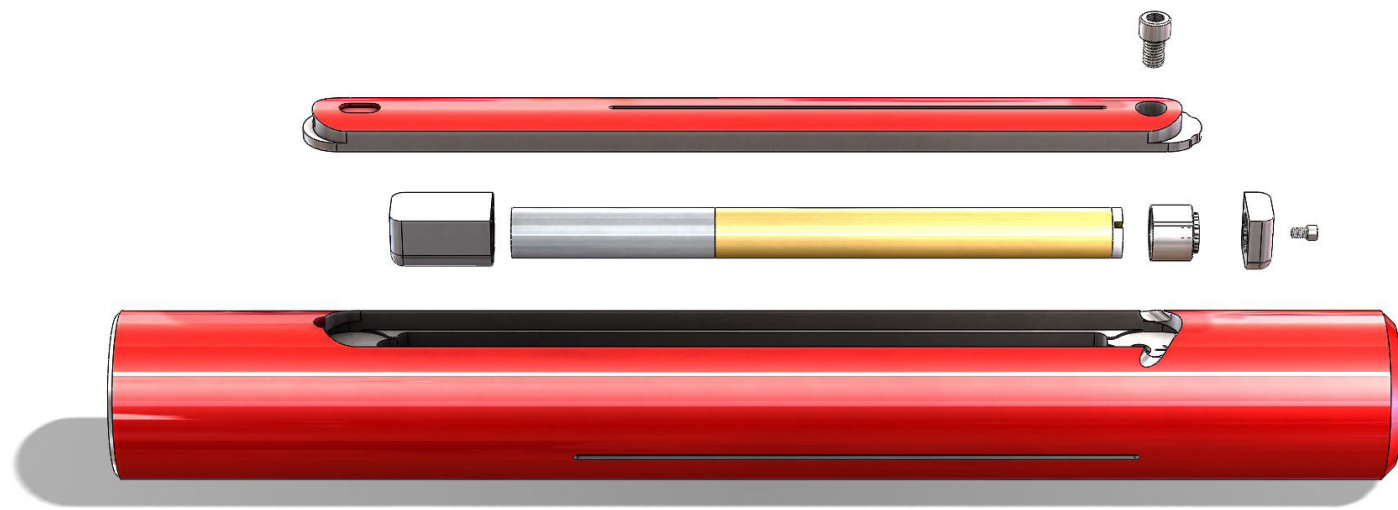
PART #	DESCRIPTION	QUANTITY
3632-HT-13-BODY	Transmitter Housing Body	1
3632-HT-13-CP	Transmitter Housing Lid	1
SHCS-1/2x3/4	Locking Lid Bolt	2
SHCS-1/2x1	Steer Bolt	6
1600-1712	Super Nozzle	1
AW-3/8	3/8" Allen Wrench	1

3742-HU (DIGITRAK) 4.25" Sonde Housing

NOTES

Box Size: 4" x 35"L

Connections: 27F x 26F



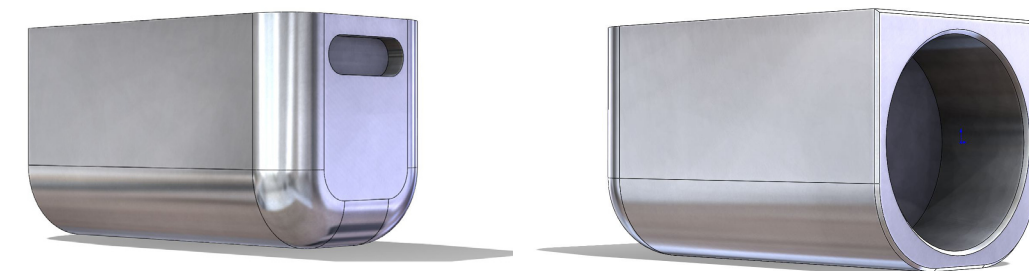
3000-TIMER1



3700-TIMER2



3700-TIMER3



Bill of Materials

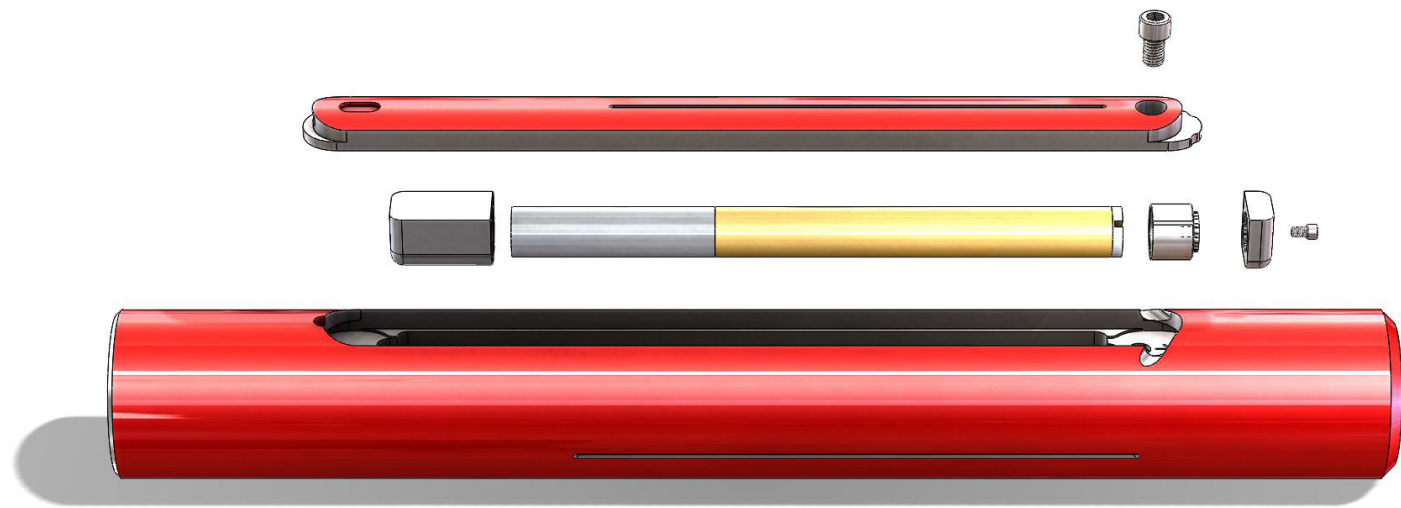
PART #	DESCRIPTION	QUANTITY
3742-HU-BODY	Transmitter Housing Body	1
3742-HU-CP	Transmitter Housing Lid	1
SHCS-1/2x3/4	Locking Lid Bolt	2
3000-TIMER1	Digitrak Sonde Timing Cap	1
3700-TIMER2	Large Digitrak Sprocket Timer	1
3700-TIMER3	Large Digitrak Round Timer	1
SHCS-1/4x3/8 SS	Digitrak Timer Bolt	1
O-RING-124	Sonde Support O-Ring	3
AW-3/8	3/8" Allen Wrench	1
AW-3/16	3/16" Allen Wrench	1

3748-HU (DIGITRAK) 4.875" Sonde Housing

NOTES

Box Size: 4" x 36"L

Connections: 29F x 28F



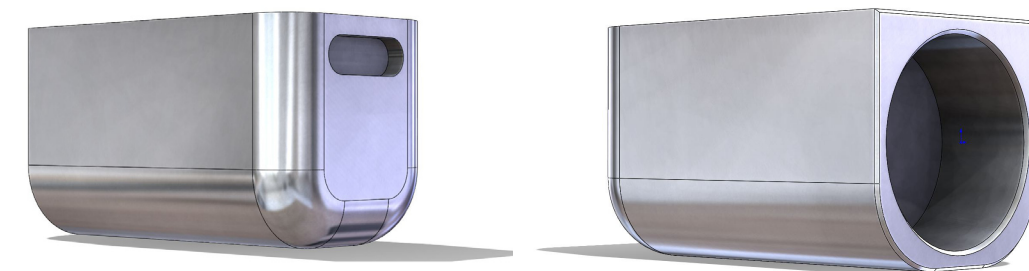
3000-TIMER1



3700-TIMER2



3700-TIMER3



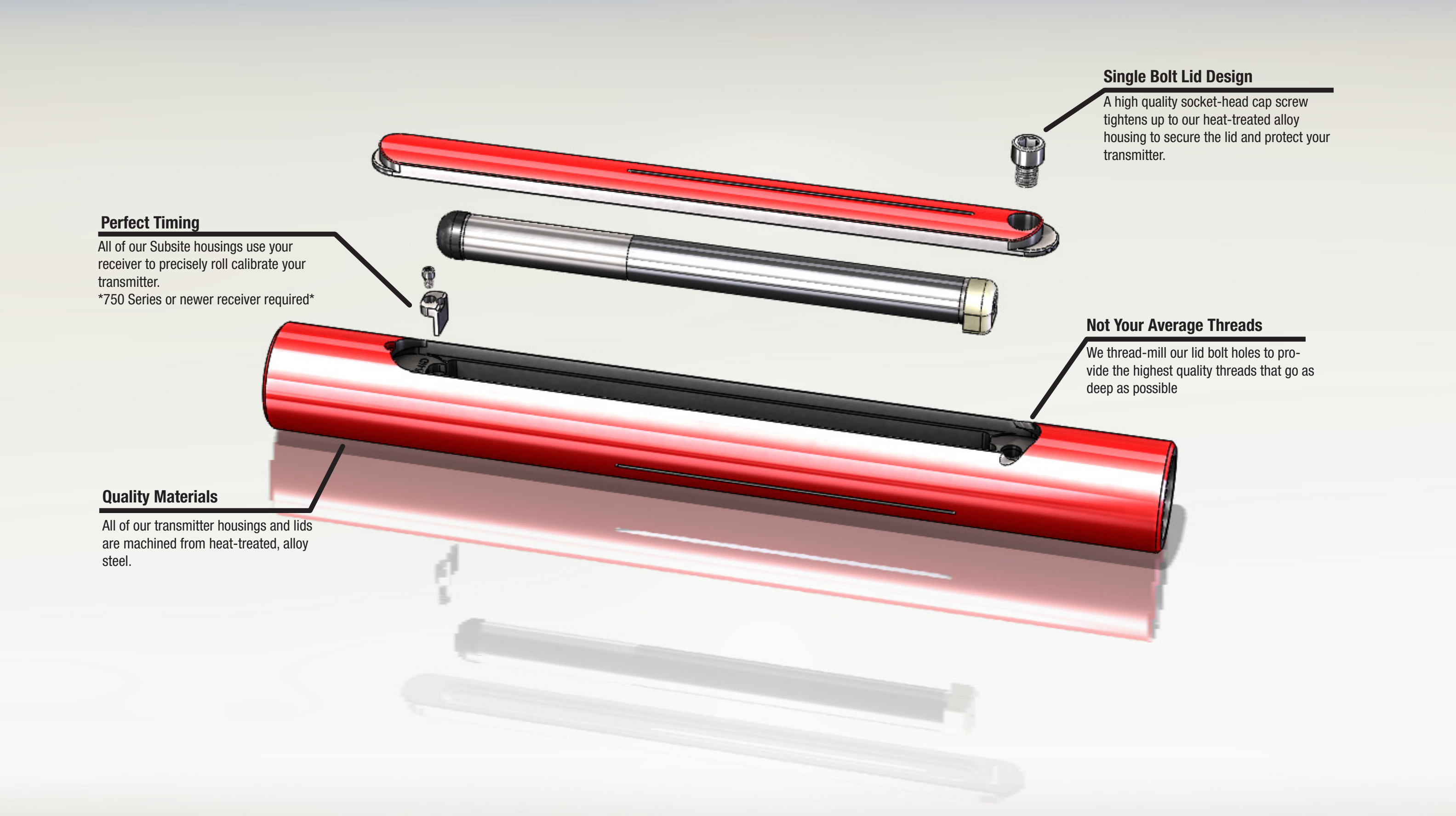
Bill of Materials

PART #	DESCRIPTION	QUANTITY
3748-HU-BODY	Transmitter Housing Body	1
3742-HU-CP	Transmitter Housing Lid	1
SHCS-1/2x3/4	Locking Lid Bolt	2
3000-TIMER1	Digitrak Sonde Timing Cap	1
3700-TIMER2	Large Digitrak Sprocket Timer	1
3700-TIMER3	Large Digitrak Round Timer	1
SHCS-1/4x3/8 SS	Digitrak Timer Bolt	1
O-RING-124	Sonde Support O-Ring	3
AW-3/8	3/8" Allen Wrench	1
AW-3/16	3/16" Allen Wrench	1

Subsite Housings

3927-HD	26
3927-HD-14	28
3932-HD2	30
3932-HD2-15	32
3935-HD	34
3935-HD-15	36
3742-HU (SUBSITE)	38
3748-HU (SUBSITE)	40

Subsite Housing Features



Perfect Timing

All of our Subsite housings use your receiver to precisely roll calibrate your transmitter.
750 Series or newer receiver required

Quality Materials

All of our transmitter housings and lids are machined from heat-treated, alloy steel.

Single Bolt Lid Design

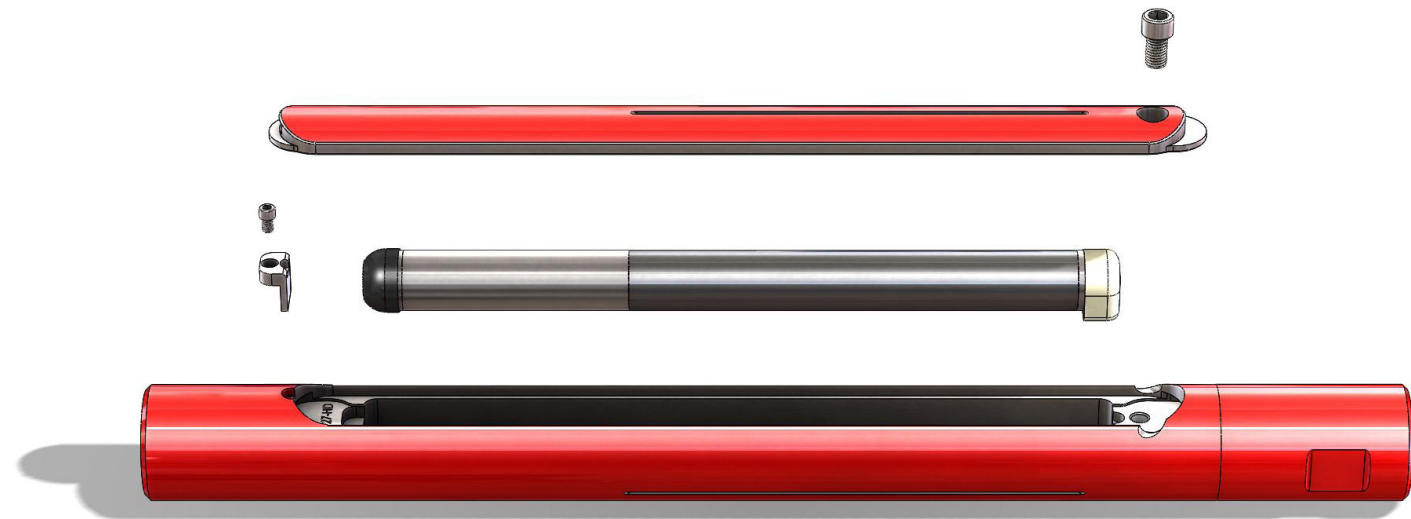
A high quality socket-head cap screw tightens up to our heat-treated alloy housing to secure the lid and protect your transmitter.

Not Your Average Threads

We thread-mill our lid bolt holes to provide the highest quality threads that go as deep as possible

Box Size: 3" x 33"L

Connections: 21F x 21F



Bill of Materials

PART #	DESCRIPTION	QUANTITY
3927-HD-BODY	Transmitter Housing Body	1
3927-HD-CP	Transmitter Housing Lid	1
SHCS12MMX20MM	Locking Lid Bolt	2
86BV2-SPACER	86BV2 Spacer (Remove when using 86B Beacon)	1
SHCS-1/4x3/8 SS	Stainless 86BV2-SPACER Bolt	1
AW-10MM	10mm Allen Wrench	1
AW-3/16	3/16" Allen Wrench	1

NOTE: The following OPTIONAL part(s) are required when using an 86B Beacon

3932-ISOL	Orange Bumper	1
-----------	---------------	---

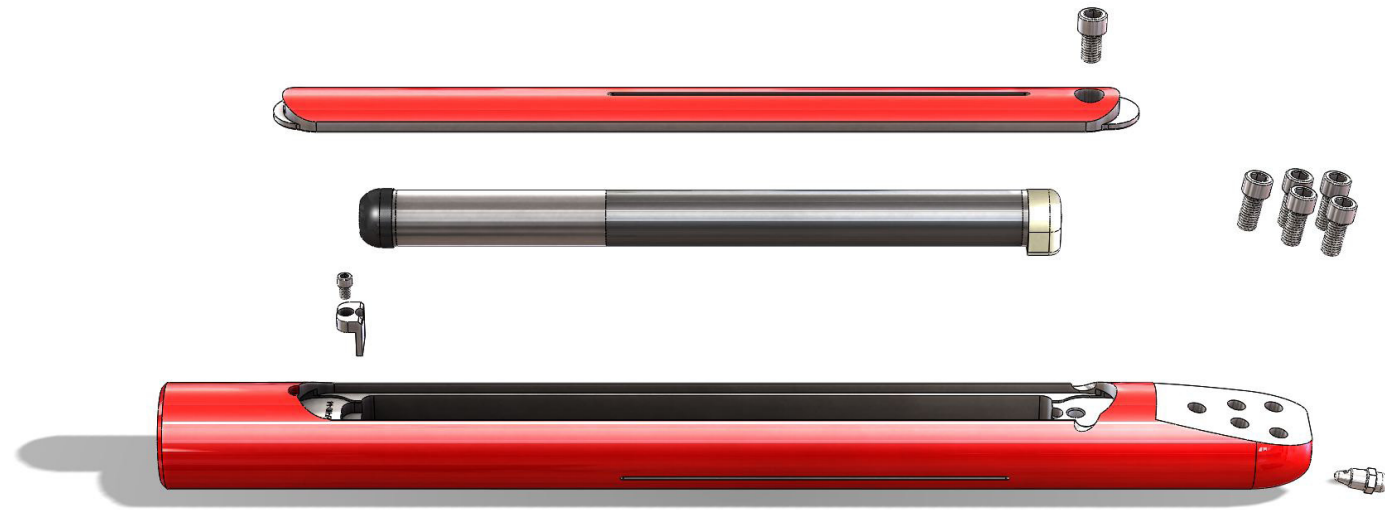
3927-HD-14

2.75" Sonde Housing w/ Steer Face

NOTES

Box Size: 3" x 32.5"L

Connections: 21F x "14" Bolt Pattern



Bill of Materials

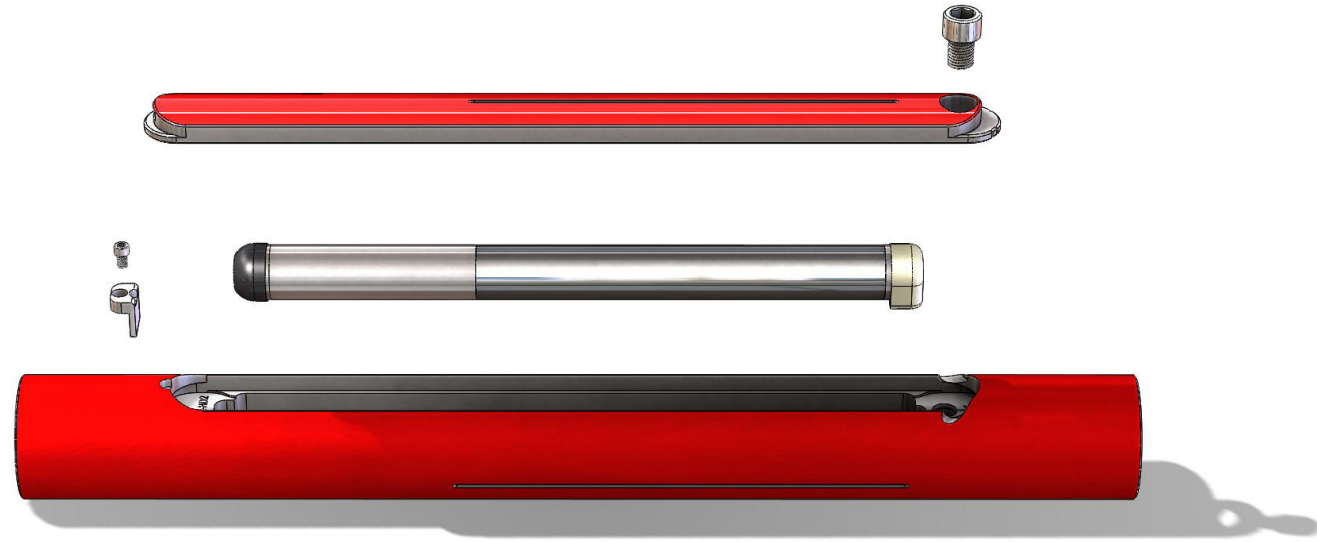
PART #	DESCRIPTION	QUANTITY
3927-HD-14-BODY	Transmitter Housing Body	1
3927-HD-CP	Transmitter Housing Lid	1
SHCS12MMX20MM	Locking Lid Bolt	2
SHCS12MMX25MM	Steer Bolt	5
86BV2-SPACER	86BV2 Spacer (Remove when using 86B Beacon)	1
SHCS-1/4x3/8 SS	Stainless 86BV2-SPACER Bolt	1
1600-1712	Super Nozzle	1
AW-10MM	10mm Allen Wrench	1
AW-3/16	3/16" Allen Wrench	1

NOTE: The following OPTIONAL part(s) are required when using an 86B Beacon

3932-ISOL	Orange Bumper	1
-----------	---------------	---

Box Size: 3" x 32"L

Connections: 23F x 23F



Bill of Materials

PART #	DESCRIPTION	QUANTITY
3932-HD2-BODY	Transmitter Housing Body	1
3935-HD-CP	Transmitter Housing Lid	1
SHCS16MMX20MM	Locking Lid Bolt	2
86BV2-SPACER	86BV2 Spacer (Remove when using 86B Beacon)	1
SHCS-1/4x3/8 SS	Stainless 86BV2-SPACER Bolt	1
AW-14MM	14mm Allen Wrench	1
AW-3/16	3/16" Allen Wrench	1

NOTE: The following OPTIONAL part(s) are required when using an 86B Beacon

3932-ISOL	Orange Bumper	1
-----------	---------------	---

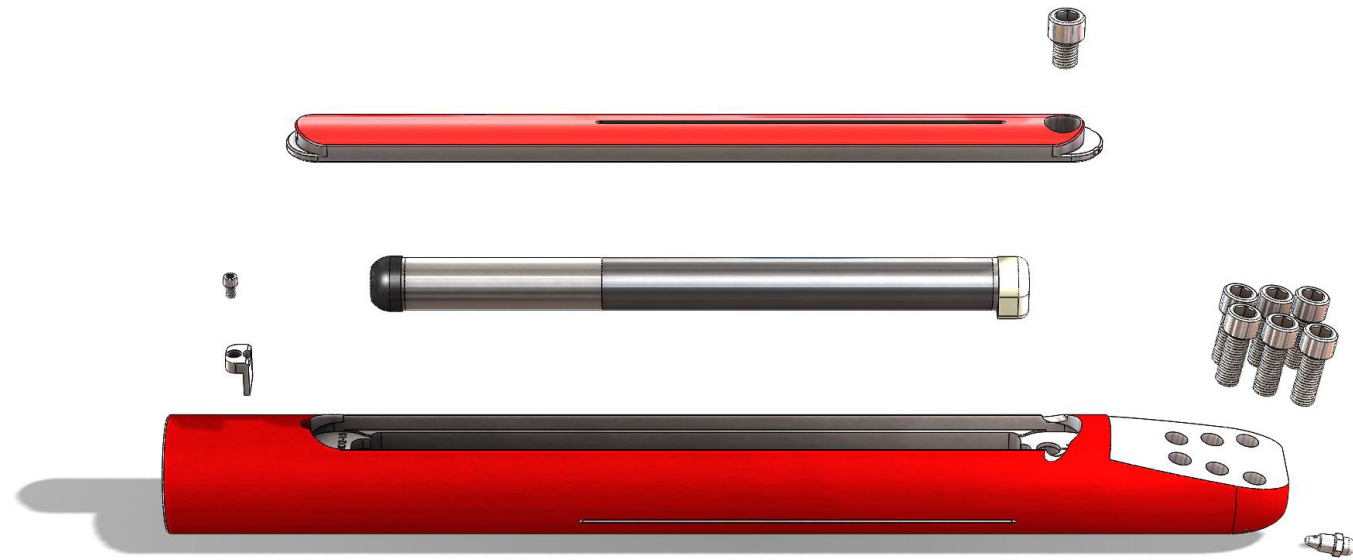
3932-HD2-15

3.25" Sonde Housing w/ Steer Face

NOTES

Box Size: 4" x 33.5"L

Connections: 23F x "15" Bolt Pattern



Bill of Materials

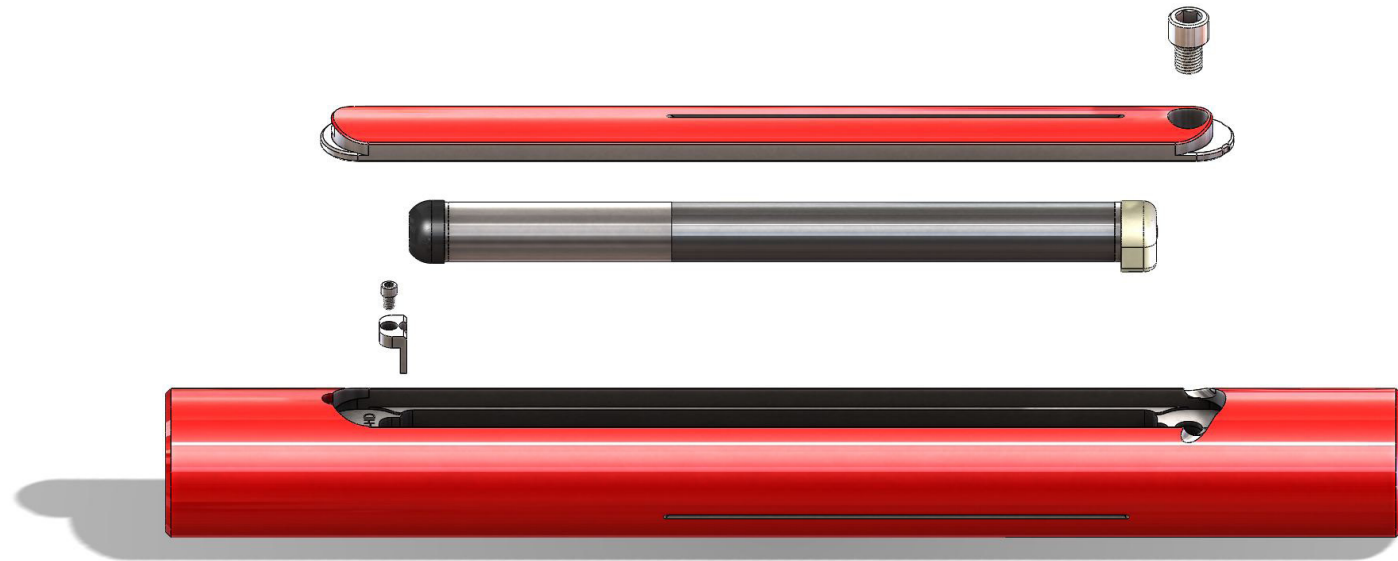
PART #	DESCRIPTION	QUANTITY
3932-HD2-15-BODY	Transmitter Housing Body	1
3935-HD-CP	Transmitter Housing Lid	1
SHCS16MMX20MM	Locking Lid Bolt	2
SHCS16MMX40MM	Steer Bolt	6
86BV2-SPACER	86BV2 Spacer (Remove when using 86B Beacon)	1
SHCS-1/4x3/8 SS	Stainless 86BV2-SPACER Bolt	1
1600-1712	Super Nozzle	1
AW-14MM	14mm Allen Wrench	1
AW-3/16	3/16" Allen Wrench	1

NOTE: The following OPTIONAL part(s) are required when using an 86B Beacon

3932-ISOL	Orange Bumper	1
-----------	---------------	---

Box Size: 4" x 32"L

Connections: 23F x 23F



Bill of Materials

PART #	DESCRIPTION	QUANTITY
3935-HD-BODY	Transmitter Housing Body	1
3935-HD-CP	Transmitter Housing Lid	1
SHCS16MMX20MM	Locking Lid Bolt	2
86BV2-SPACER	86BV2 Spacer (Remove when using 86B Beacon)	1
SHCS-1/4x3/8 SS	Stainless 86BV2-SPACER Bolt	1
AW-14MM	14mm Allen Wrench	1
AW-3/16	3/16" Allen Wrench	1

NOTE: The following OPTIONAL part(s) are required when using an 86B Beacon

3932-ISOL	Orange Bumper	1
-----------	---------------	---

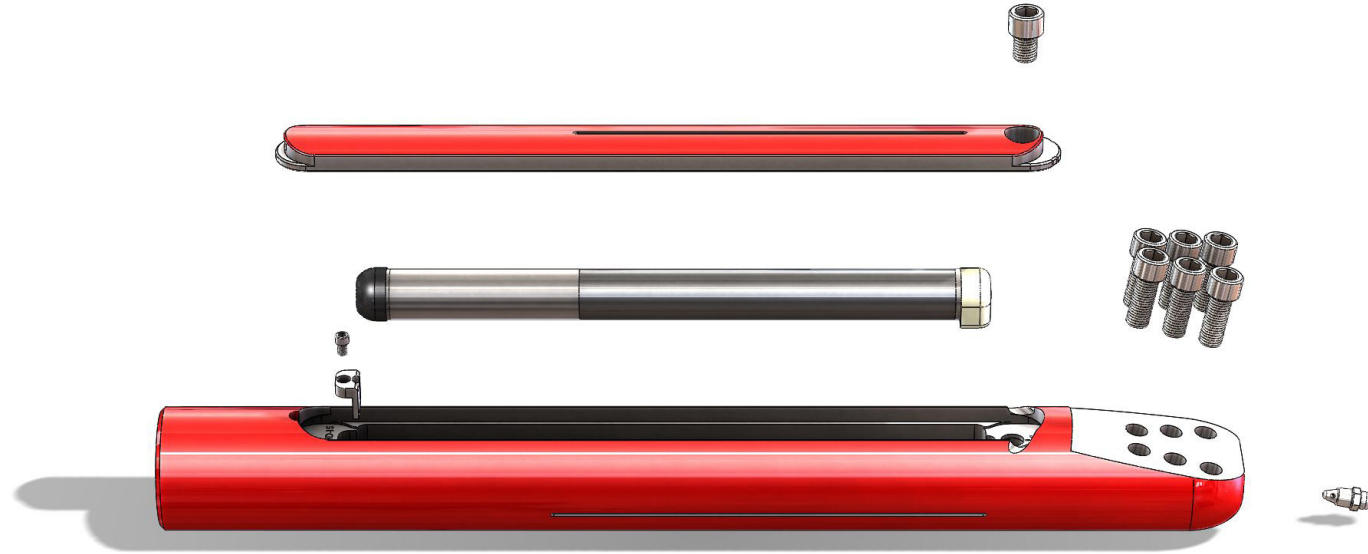
3935-HD-15

3.5" Sonde Housing w/ Steer Face

NOTES

Box Size: 4" x 33.5"L

Connections: 23F x "15" Bolt Pattern



Bill of Materials

PART #	DESCRIPTION	QUANTITY
3935-HD-15-BODY	Transmitter Housing Body	1
3935-HD-CP	Transmitter Housing Lid	1
SHCS16MMX20MM	Locking Lid Bolt	2
SHCS16MMX40MM	Steer Bolt	6
86BV2-SPACER	86BV2 Spacer (Remove when using 86B Beacon)	1
SHCS-1/4x3/8 SS	Stainless 86BV2-SPACER Bolt	1
1600-1712	Super Nozzle	1
AW-14MM	14mm Allen Wrench	1
AW-3/16	3/16" Allen Wrench	1

NOTE: The following OPTIONAL part(s) are required when using an 86B Beacon

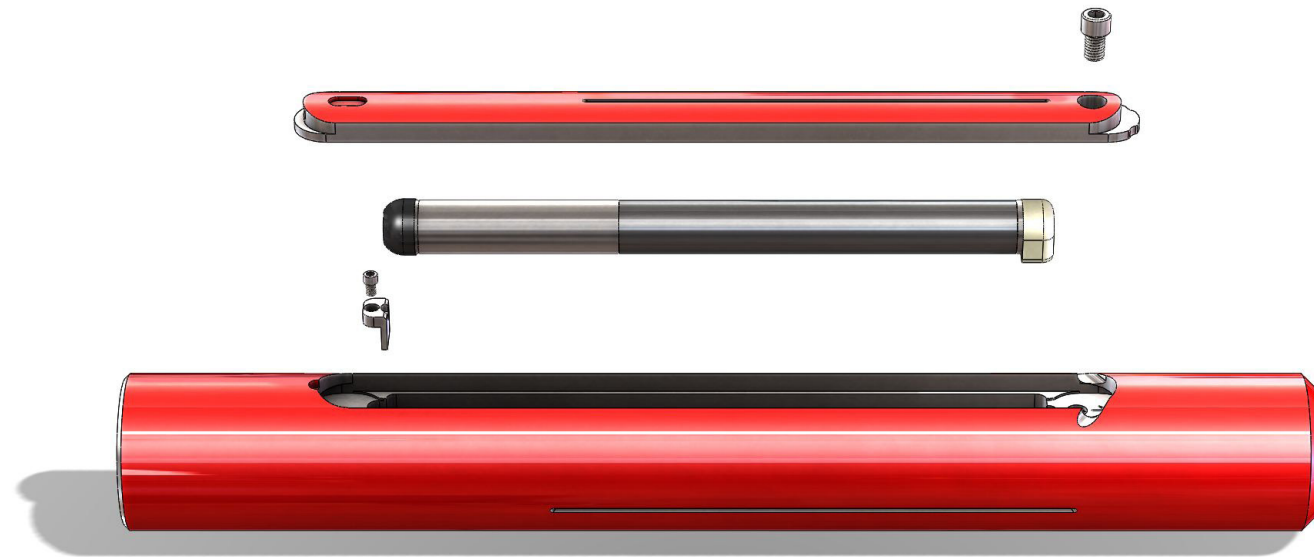
3932-ISOL	Orange Bumper	1
-----------	---------------	---

3742-HU (SUBSITE) 4.25" Sonde Housing

NOTES

Box Size: 4" x 35"L

Connections: 27F x 26F



Bill of Materials

PART #	DESCRIPTION	QUANTITY
3742-HU-BODY	Transmitter Housing Body	1
3742-HU-CP	Transmitter Housing Lid	1
SHCS-1/2x3/4	Locking Lid Bolt	2
86BV2-SPACER	86BV2 Spacer (Remove when using 86B Beacon)	1
SHCS-1/4x3/8 SS	Stainless 86BV2-SPACER Bolt	1
AW-3/8	3/8" Allen Wrench	1
AW-3/16	3/16" Allen Wrench	1

NOTE: The following OPTIONAL part(s) are required when using an 86B Beacon

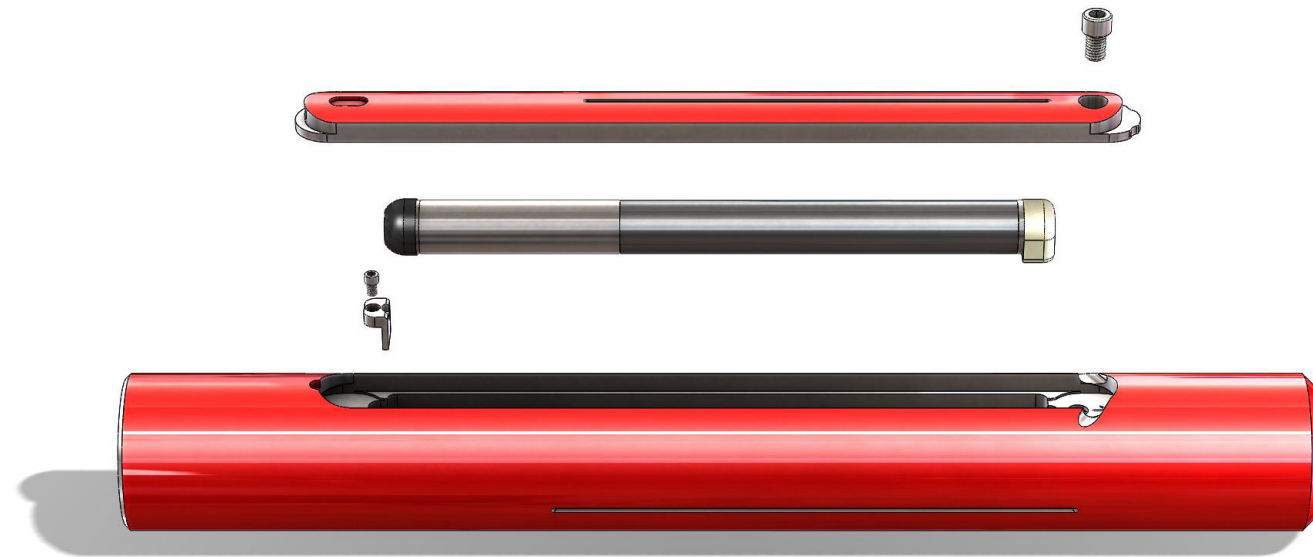
3932-ISOL	Orange Bumper	1
-----------	---------------	---

3748-HU (SUBSITE) 4.875" Sonde Housing

NOTES

Box Size: 4" x 35"L

Connections: 29F x 28F



Bill of Materials

PART #	DESCRIPTION	QUANTITY
3748-HU-BODY	Transmitter Housing Body	1
3748-HU-BODY	Transmitter Housing Lid	1
SHCS-1/2x3/4	Locking Lid Bolt	2
86BV2-SPACER	86BV2 Spacer (Remove when using 86B Beacon)	1
SHCS-1/4x3/8 SS	Stainless 86BV2-SPACER Bolt	1
AW-3/8	3/8" Allen Wrench	1
AW-3/16	3/16" Allen Wrench	1

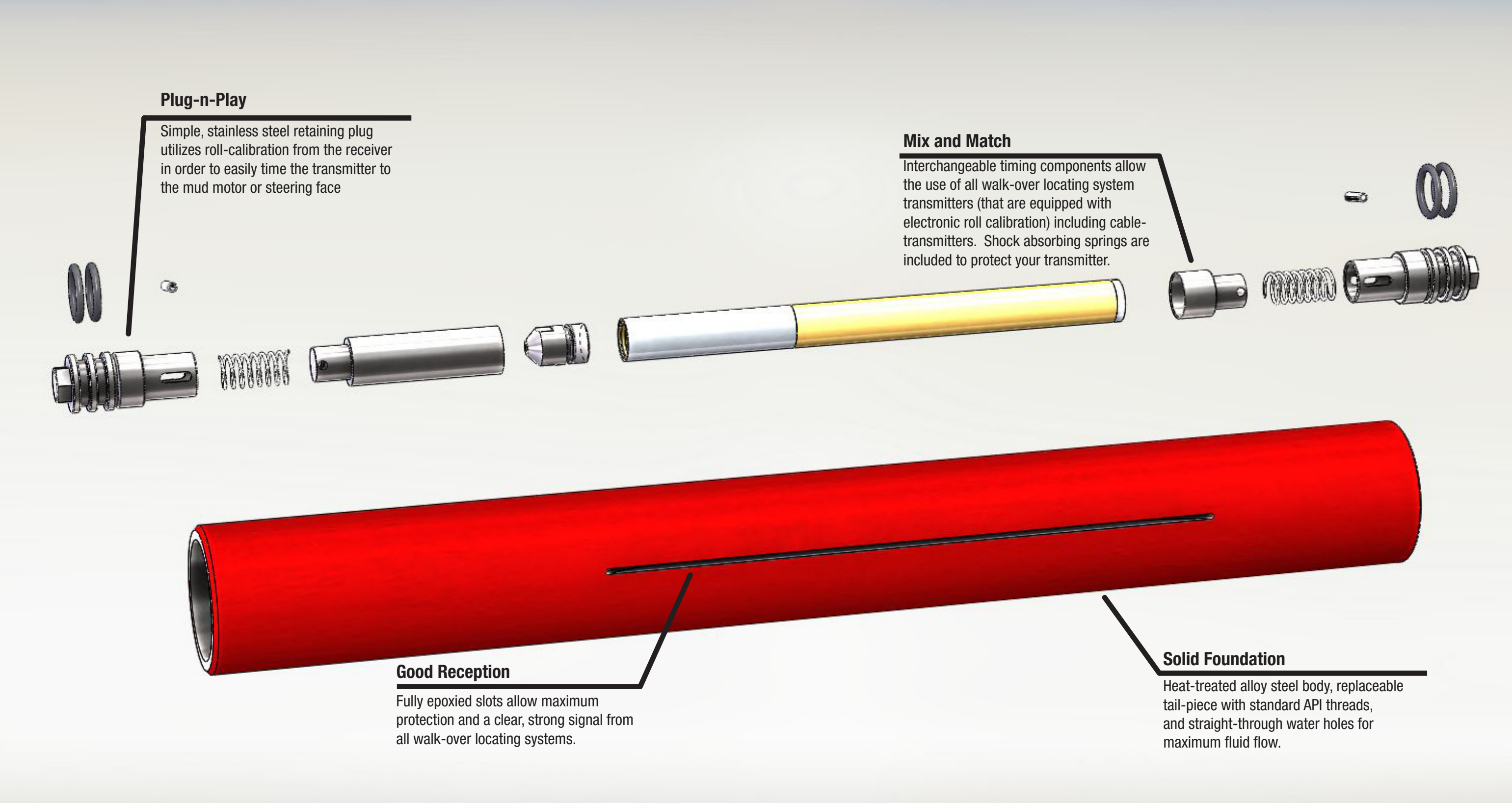
NOTE: The following OPTIONAL part(s) are required when using an 86B Beacon

3932-ISOL	Orange Bumper	1
-----------	---------------	---

End-Load Housings

ELH 425 (86B)	46
(BV2)	48
(DIGI)	50
(DIGIXL)	52
(WIRE)	54
ELH 487 (86B)	56
(BV2)	58
(DIGI)	60
(DIGIXL)	62
(WIRE)	64

End-Load Housing Features



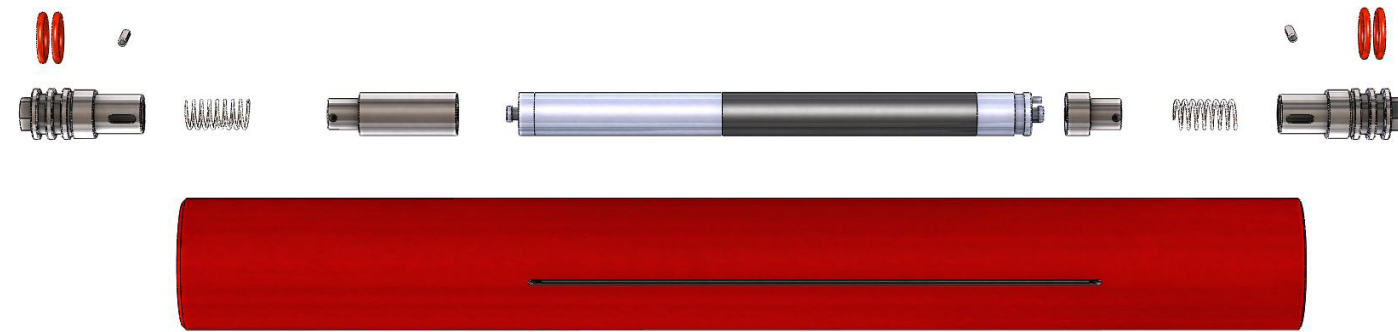
ELH-425 (86B)

4.25" End-Load Sonde Housing

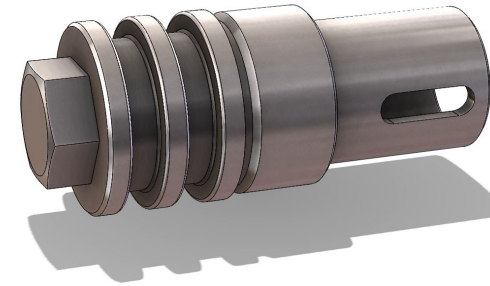
NOTES

Box Size: 4" x 39"L

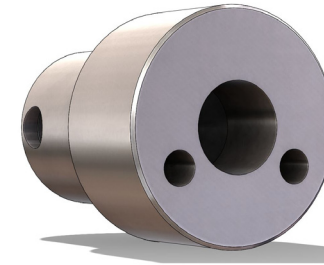
Connections: 27F x 26F



ELH-PLUG



ELH-86B-TIMER1



ELH-86B-SPACER



Bill of Materials

PART #	DESCRIPTION	QUANTITY
ELH-425-BODY	Transmitter Housing Body	1

ELH-86B-KIT	86B Subsite Transmitter Kit	
ELH-PLUG	Sealing Plug	2
O-RING-322	1-1/4" ID x 1-5/8" OD	4
ELH-SPRING	Shock Absorbing Spring	2
SP-1.25X.25-SS	1.25" Long, 0.25" Diameter Spring Pin	2
ELH-86B-TIMER1	Timer for 86B Beacon	1
ELH-86B-SPACER	Spacer for 86B Beacon	1
ELH-TOOL (+DW Adapter)	Transmitter Removal Tool	1
ELH-SOCKET	15/16" Socket, Plug Removal Tool	1

NOTE: Remove rubber bumpers from beacon

ELH-425 (BV2)

4.25" End-Load Sonde Housing

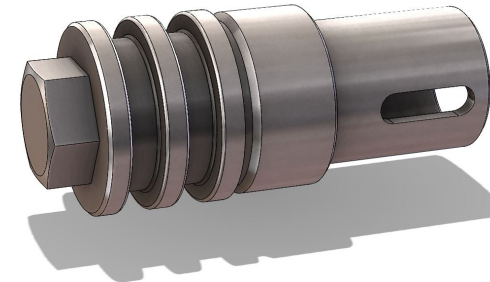
NOTES

Box Size: 4" x 39"L

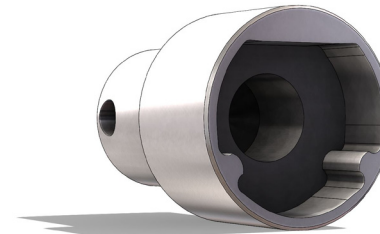
Connections: 27F x 26F



ELH-PLUG



ELH-BV2-TIMER1



ELH-BV2-SPACER



Bill of Materials

PART #	DESCRIPTION	QUANTITY
ELH-425-BODY	Transmitter Housing Body	1

ELH-BV2-KIT	BV2 Subsite Transmitter Kit	
ELH-PLUG	Sealing Plug	2
O-RING-322	1-1/4" ID x 1-5/8" OD	4
ELH-SPRING	Shock Absorbing Spring	2
SP-1.25X.25-SS	1.25" Long, 0.25" Diameter Spring Pin	2
ELH-BV2-SPACER	Spacer for BV2 Beacon	1
ELH-BV2-TIMER1	Timer for BV2 Beacon	1
ELH-TOOL (+DW Adapter)	Transmitter Removal Tool	1
ELH-SOCKET	15/16" Socket, Plug Removal Tool	1

NOTE: Remove rubber bumpers from beacon

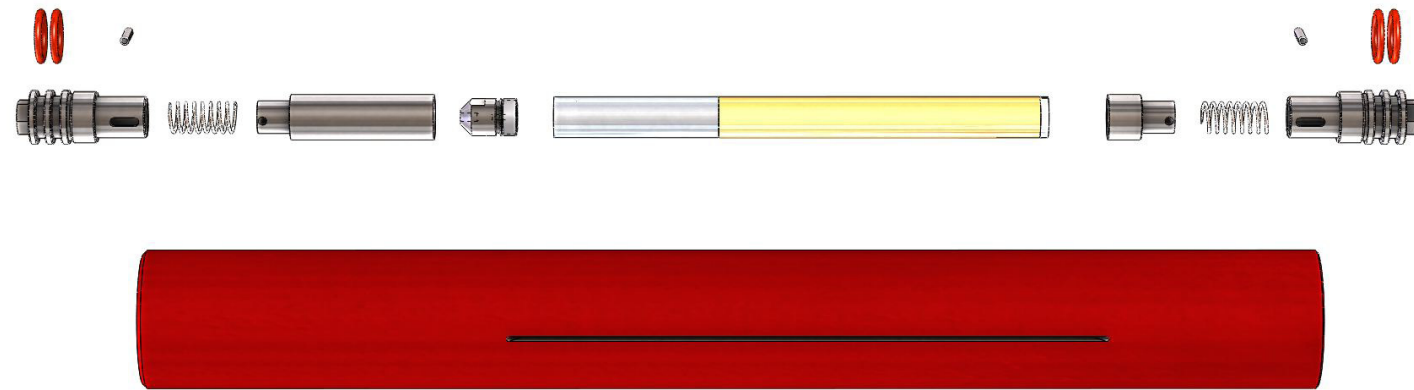
ELH-425 (DIGI)

4.25" End-Load Sonde Housing

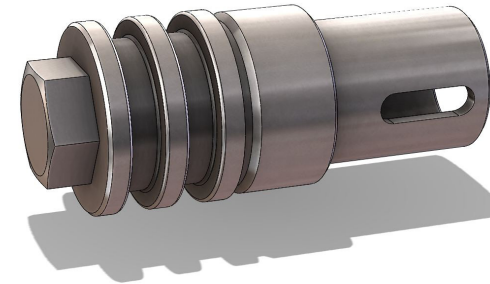
NOTES

Box Size: 4" x 39"L

Connections: 27F x 26F



ELH-PLUG



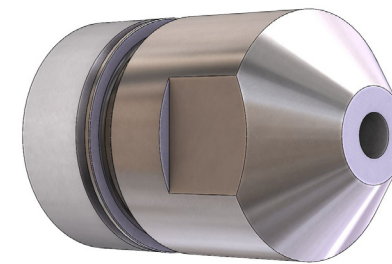
ELH-DIGI-TIMER1



ELH-DIGI-SPACER



ELH-D-BCAP



Bill of Materials

PART #	DESCRIPTION	QUANTITY
ELH-425-BODY	Transmitter Housing Body	1

ELH-DIGI-KIT	Digitrak Transmitter Kit (15")	
ELH-PLUG	Sealing Plug	2
O-RING-322	1-1/4" ID x 1-5/8" OD	4
ELH-SPRING	Shock Absorbing Spring	2
SP-1.25X.25-SS	1.25" Long, 0.25" Diameter Spring Pin	2
ELH-DIGI-SPACER	Spacer for Digitrak Transmitter	1
ELH-DIGI-TIMER1	Timer for Digitrak Transmitter	1
ELH-D-BCAP	ELH Adapter Battery Cap (replaces existing cap)	1
ELH-TOOL	Transmitter Removal Tool	1
ELH-SOCKET	15-16" Socket, Plug Removal Tool	1

ELH-425 (DIGIXL) 4.25" End-Load Sonde Housing

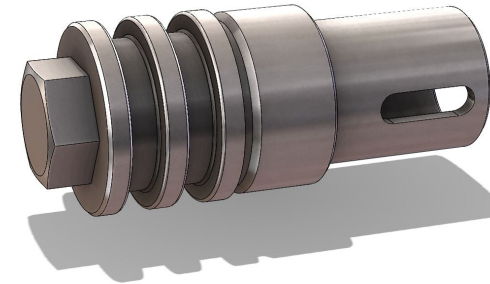
NOTES

Box Size: 4" x 39"L

Connections: 27F x 26F



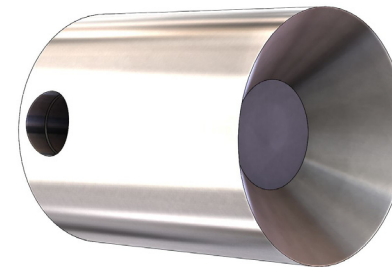
ELH-PLUG



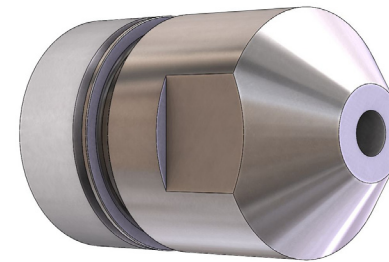
ELH-DIGI-TIMER1



ELH-DIGIXL-SPACER



ELH-D-BCAP



Bill of Materials

PART #	DESCRIPTION	QUANTITY
ELH-425-BODY	Transmitter Housing Body	1

ELH-DIGIXL-KIT	Digitrak XL Transmitter Kit (19")	
ELH-PLUG	Sealing Plug	2
O-RING-322	1-1/4" ID x 1-5/8" OD	4
ELH-SPRING	Shock Absorbing Spring	2
SP-1.25X.25-SS	1.25" Long, 0.25" Diameter Spring Pin	2
ELH-DIGIXL-SPACER	Spacer for Digitrak XL Transmitter	1
ELH-DIGI-TIMER1	Timer for Digitrak XL Transmitter	1
ELH-D-BCAP	ELH Adapter Battery Cap (replaces existing cap)	1
ELH-TOOL	Transmitter Removal Tool	1
ELH-SOCKET	15/16" Socket, Plug Removal Tool	1

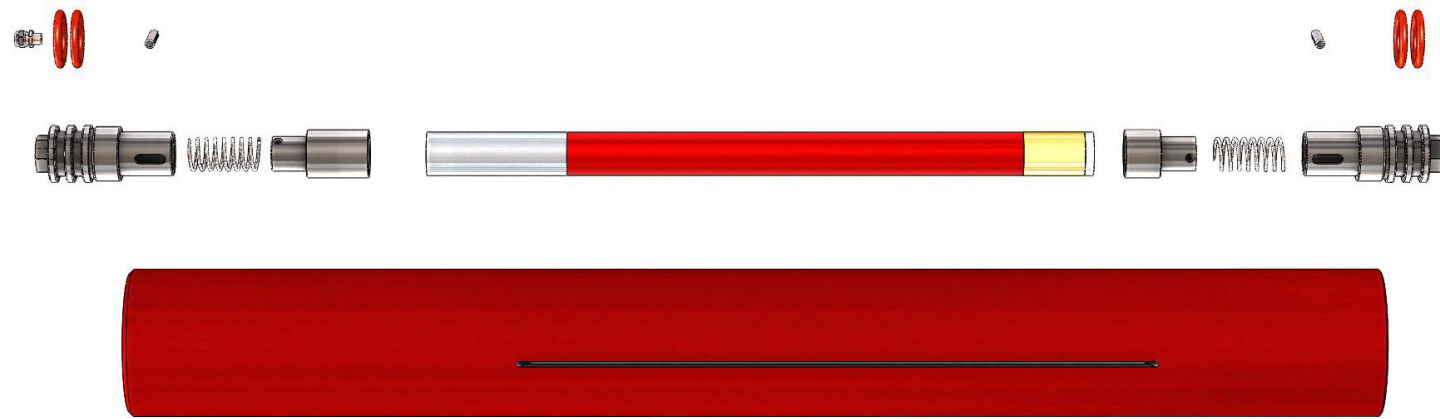
ELH-425 (WIRE)

4.25" End-Load Sonde Housing

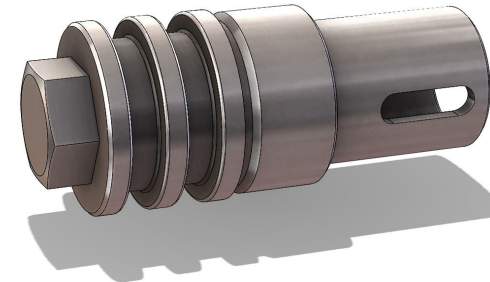
NOTES

Box Size: 4" x 39"L

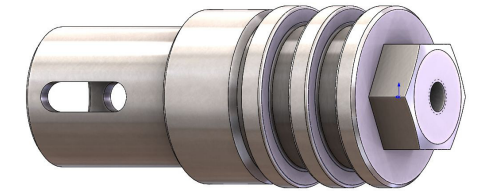
Connections: 27F x 26F



ELH-PLUG



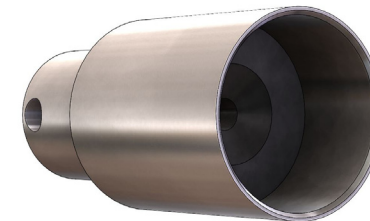
ELH-PLUG-WIRE



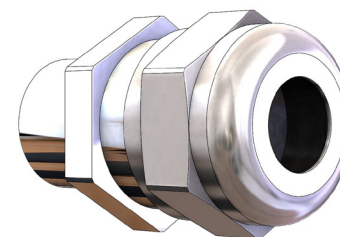
ELH-DIGI-TIMER1



ELH-DIGI-WIRE-SPACER



ELH-WIRE-GLAND



Bill of Materials

PART #	DESCRIPTION	QUANTITY
ELH-425-BODY	Transmitter Housing Body	1

ELH-DIGIWIRE-KIT	Digitrak Cable Transmitter Kit	
ELH-PLUG	Sealing Plug	1
ELH-PLUG-WIRE	Sealing Plug with Wire Hole	1
ELH-WIRE-GLAND	Sealing Gland for Wire	1
O-RING-322	1-1/4" ID x 1-5/8" OD	4
ELH-SPRING	Shock Absorbing Spring	2
SP-1.25X.25-SS	1.25" Long, 0.25" Diameter Spring Pin	1
SP-0.5X.25-SS	0.5" Long, 0.25" Diameter Spring Pin	2
ELH-DIGI-WIRE-SPACER	Spacer for Wire Transmitter	1
ELH-DIGI-TIMER1	Timer for Digitrak Transmitter	1
ELH-TOOL	Transmitter Removal Tool	1
ELH-WIRE-TOOL	Wireline Installation Tool	1

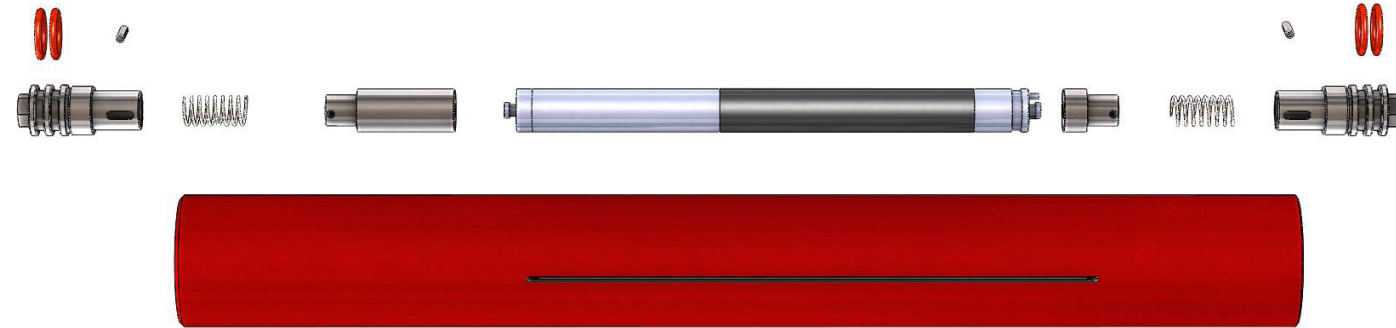
ELH-487 (86B)

4.875" End-Load Sonde Housing

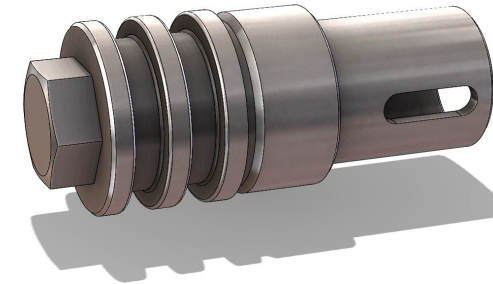
NOTES

Box Size: 40"L

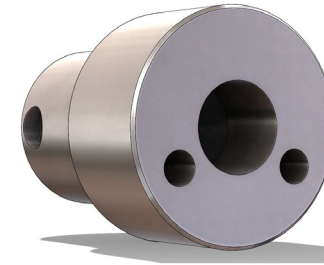
Connections: 29F x 28F



ELH-PLUG



ELH-86B-TIMER1



ELH-86B-SPACER



Bill of Materials

PART #	DESCRIPTION	QUANTITY
ELH-487-BODY	Transmitter Housing Body	1

ELH-86B-KIT	86B Subsite Transmitter Kit	
ELH-PLUG	Sealing Plug	2
O-RING-322	1-1/4" ID x 1-5/8" OD	4
ELH-SPRING	Shock Absorbing Spring	2
SP-1.25X.25-SS	1.25" Long, 0.25" Diameter Spring Pin	2
ELH-86B-TIMER1	Timer for 86B Beacon	1
ELH-86B-SPACER	Spacer for 86B Beacon	1
ELH-TOOL (+DW Adapter)	Transmitter Removal Tool	1
ELH-SOCKET	15/16" Socket, Plug Removal Tool	1

NOTE: Remove rubber bumpers from beacon

ELH-487 (BV2)

4.875" End-Load Sonde Housing

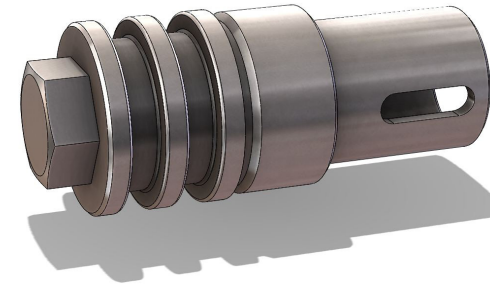
NOTES

Box Size: 40"L

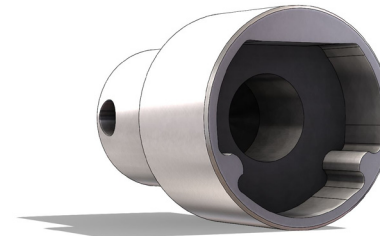
Connections: 29F x 28F



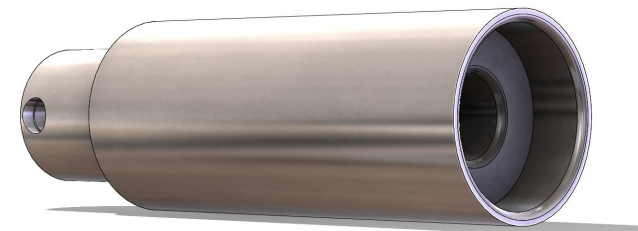
ELH-PLUG



ELH-BV2-TIMER1



ELH-BV2-SPACER



Bill of Materials

PART #	DESCRIPTION	QUANTITY
ELH-487-BODY	Transmitter Housing Body	1

ELH-BV2-KIT	BV2 Subsite Transmitter Kit	
ELH-PLUG	Sealing Plug	2
O-RING-322	1-1/4" ID x 1-5/8" OD	4
ELH-SPRING	Shock Absorbing Spring	2
SP-1.25X.25-SS	1.25" Long, 0.25" Diameter Spring Pin	2
ELH-BV2-SPACER	Spacer for BV2 Beacon	1
ELH-BV2-TIMER1	Timer for BV2 Beacon	1
ELH-TOOL (+DW Adapter)	Transmitter Removal Tool	1
ELH-SOCKET	15/16" Socket, Plug Removal Tool	1

NOTE: Remove rubber bumpers from beacon

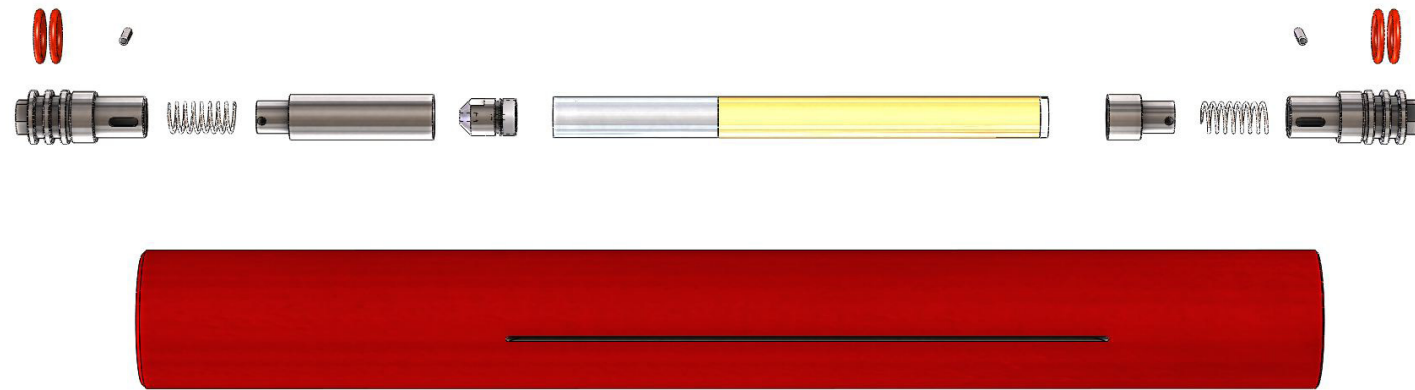
ELH-487 (DIGI)

4.875" End-Load Sonde Housing

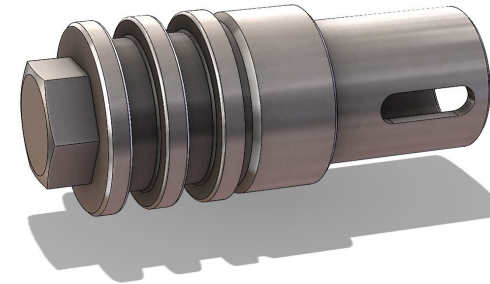
NOTES

Box Size: 40"L

Connections: 29F x 28F



ELH-PLUG



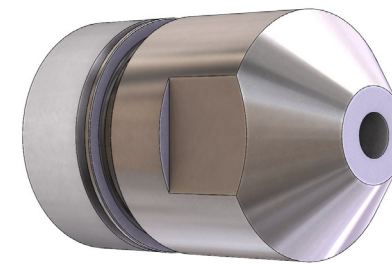
ELH-DIGI-TIMER1



ELH-DIGI-SPACER



ELH-D-BCAP



Bill of Materials

PART #	DESCRIPTION	QUANTITY
ELH-487-BODY	Transmitter Housing Body	1

ELH-DIGI-KIT	Digitrak Transmitter Kit (15")	
ELH-PLUG	Sealing Plug	2
O-RING-322	1-1/4" ID x 1-5/8" OD	4
ELH-SPRING	Shock Absorbing Spring	2
SP-1.25X.25-SS	1.25" Long, 0.25" Diameter Spring Pin	2
ELH-DIGI-SPACER	Spacer for Digitrak Transmitter	1
ELH-DIGI-TIMER1	Timer for Digitrak Transmitter	1
ELH-D-BCAP	ELH Adapter Battery Cap (replaces existing cap)	1
ELH-TOOL	Transmitter Removal Tool	1
ELH-SOCKET	15-16" Socket, Plug Removal Tool	1

ELH-487 (DIGIXL) 4.875" End-Load Sonde Housing

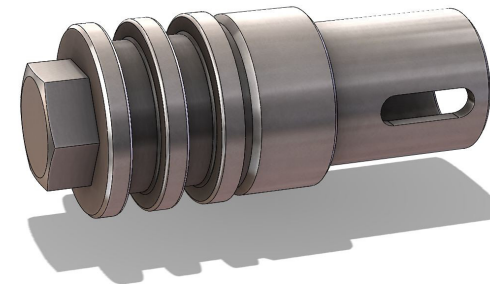
NOTES

Box Size: 40"L

Connections: 29F x 28F



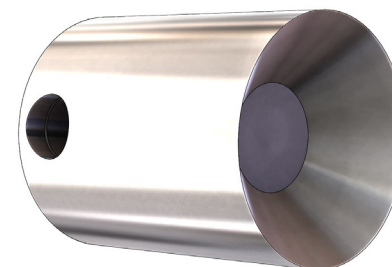
ELH-PLUG



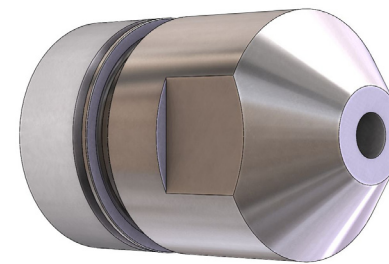
ELH-DIGI-TIMER1



ELH-DIGIXL-SPACER



ELH-D-BCAP



Bill of Materials

PART #	DESCRIPTION	QUANTITY
ELH-487-BODY	Transmitter Housing Body	1

ELH-DIGIXL-KIT	Digitrak XL Transmitter Kit (19")	
ELH-PLUG	Sealing Plug	2
O-RING-322	1-1/4" ID x 1-5/8" OD	4
ELH-SPRING	Shock Absorbing Spring	2
SP-1.25X.25-SS	1.25" Long, 0.25" Diameter Spring Pin	2
ELH-DIGIXL-SPACER	Spacer for Digitrak XL Transmitter	1
ELH-DIGI-TIMER1	Timer for Digitrak XL Transmitter	1
ELH-D-BCAP	ELH Adapter Battery Cap (replaces existing cap)	1
ELH-TOOL	Transmitter Removal Tool	1
ELH-SOCKET	15/16" Socket, Plug Removal Tool	1

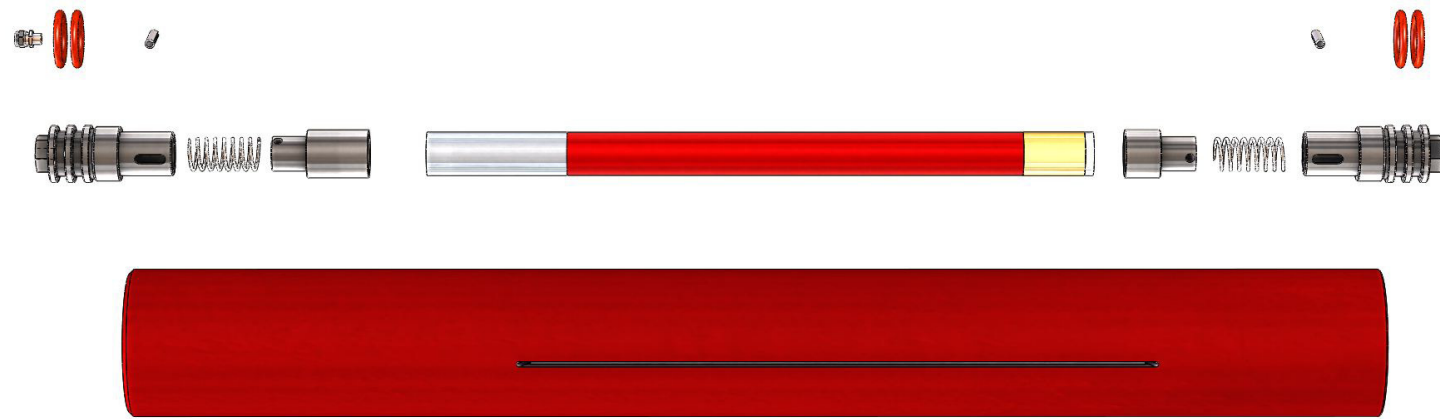
ELH-487 (WIRE)

4.875" End-Load Sonde Housing

NOTES

Box Size: 40"L

Connections: 29F x 28F

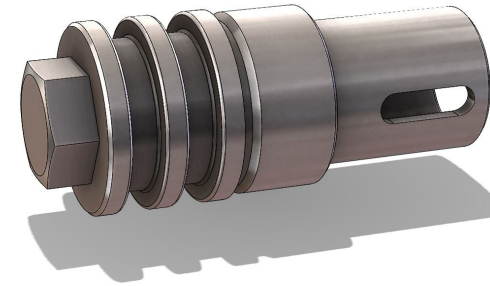


Bill of Materials

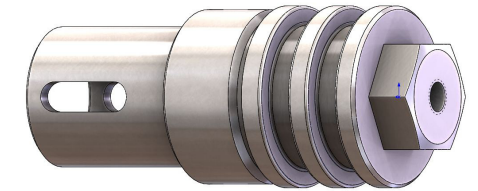
PART #	DESCRIPTION	QUANTITY
ELH-487-BODY	Transmitter Housing Body	1

ELH-DIGIWIRE-KIT	Digitrak Cable Transmitter Kit	
ELH-PLUG	Sealing Plug	1
ELH-PLUG-WIRE	Sealing Plug with Wire Hole	1
ELH-WIRE-GLAND	Sealing Gland for Wire	1
O-RING-322	1-1/4" ID x 1-5/8" OD	4
ELH-SPRING	Shock Absorbing Spring	2
SP-1.25X.25-SS	1.25" Long, 0.25" Diameter Spring Pin	1
SP-0.5X.25-SS	0.5" Long, 0.25" Diameter Spring Pin	2
ELH-DIGI-WIRE-SPACER	Spacer for Wire Transmitter	1
ELH-DIGI-TIMER1	Timer for Digitrak Transmitter	1
ELH-TOOL	Transmitter Removal Tool	1
ELH-WIRE-TOOL	Wireline Installation Tool	1

ELH-PLUG



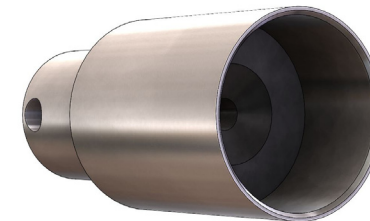
ELH-PLUG-WIRE



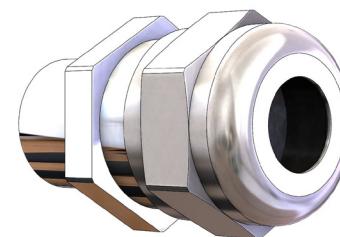
ELH-DIGI-TIMER1



ELH-DIGI-WIRE-SPACER



ELH-WIRE-GLAND



NOTES

NOTES

800 . 558 . 7500
www.melfredborzall.com

MELFRED
BORZALL